

ENERGY EFFICIENT FLOW AND LEVEL CONTROL IN A HYDRO POWER PLANT USING FUZZY LOGIC

¹A. Selwin Mich Priyadharson, ²M.S. Saravanan,
³N. Gomathi, ⁴S. Vinson Joshua and ⁵A. Mutharasan

^{1,4,5}School of Electrical, Vel Tech University, Chennai, India

^{2,3}School of Computing, Vel Tech University, Chennai, India

⁵School of Electrical, Vel Tech High Tech Engineering College, Chennai, India

Received 2013-04-12; Revised 2014-02-19; Accepted 2014-04-19

ABSTRACT

The main objective and an innovative design of this work is to improve the energy efficiency by controlling the variables flow and level in a hydroelectric power plant using Programmable Logic Control (PLC)-Human Machine Interface (HMI) and fuzzy logic approach. This project will focus on design and development of flow and level controller for small scale hydro generating units by implementing gate control based on PLC-HMI and Fuzzy Logic Control (FLC). So far there is no other better performing control scheme, with uncomplicated approach, in order to match and satisfy the dynamic changes in load demand. In this project, FLC will be applied to flow and level control for small scale hydro generating units is proposed. A lab scale experimental setup is made-up as prototype model for flow and level control and simulation outputs were achieved, using PLC-HMI based fuzzy controller scheme. The hardware set up is designed with 5 stages in the tank 1 and 2 stages in the tank 2. Based on the outputs of the level sensors from tanks 1 and 2, the ladder logic will perform. B&R Industrial Automation PLC inbuilt with 24 digital inputs and provides 16 potential free outputs is used to perform control action. Finally, the performance of the proposed scheme is evaluated by simulation results by comparing with conventional controllers output using the data collected from the hydroelectric power plant. The merits of the proposed Fuzzy scheme over the conventional method are spotlighted.

Keywords: FLC, Hydropower Plant, Ladder Logic, Level Sensor, PLC-HMI

1. INTRODUCTION

Hydro electric power is a main source of renewable energy for power generation. Nowadays for world energy requirement hydro electric power is intensifying as a major contributor

Conversion of potential energy of water into electricity takes place in hydroelectric power plant. The production of energy is based on the available water flow and altitude it plummets (Rajeswari *et al.*, 2012). To manage the drawbacks of conventional type such as Ecosystem damage, siltation, flow shortage, methane emissions, automation is preferable (Guo, 2009).

Rajeswari *et al.* (2012) highlighted on controlling the variables level and flow with real time

implementation of gate control in hydroelectric power plant using PLC. Liang (2000) proposed a methodology derived from neural network in hydro power production using pumped-storage units. King *et al.* (2001) discussed the governor control in a pumped storage hydroelectric plant using Fuzzy Inference System (FIS). Rabelo *et al.* (2012) proposed the implementation of Reservoir Operation Rules (ROR) using fuzzy and Particle Swarm Optimization (PSO).

Umamahesh and Chandramouli (2006) explained that Fuzzy dynamic programming model was used for Hirakud dam in Orissa, India in which fuzzy variables were irrigation, hydropower generation and flood control. Bai and Tamjis (2007) developed a FLC model for better performance and control of hydro-power generation. Atmojo *et al.* (2014) and Adhikary *et al.*

Corresponding Author: A. Selwin Mich Priyadharson, School of Electrical, Vel Tech University, Chennai, India

(2012) explained that the fuzzy logic method is very useful for problem solving approach in small hydro power generation. The rule base and membership functions have a great influence on the performance and efficacy of the plant and also to optimize the small hydro power generation in the high altitude region. Yadav *et al.* (2011) presented the TSK fuzzy controller in order to maintain water level constant in run-of-river hydro power plant. Nanhua and Xiaoju (2010) presented a nonlinear dynamic model depending on the behavior of the hydroelectric units with hydraulic interconnection in nonlinear condition and they developed adaptive fuzzy controller based on that model.

Singh and Chauhan (2011) described that in hydrothermal power plant an exact signal is necessary to manipulate the gate that has to be identified and it will match the requirement of sudden large change in the loads. Also he described that the maximum sudden increase and decrease in load system has to be expected and consequent manipulation in gate position has to be well-known.

And also with the intention of enhance, the performance of the hydroelectric power plant, the PLC-HMI based fuzzy controller scheme is developed. The PLC-HMI based fuzzy controller scheme for water flow and level control is proposed. The present paper is structured as follows: Section 2 deals with process and prototype model description. Section 3 deals with the conventional scheme for hydroelectric power plant. Section 4 describes PLC-HMI based fuzzy controller scheme. Section 5 describes the Visualization. Section 6 describes the simulation studies of conventional and PLC-HMI based fuzzy controller for flow and level control. Section 7 gives the summary and conclusions.

2. PROCESS AND PROTOTYPE MODEL DESCRIPTION

Electricity demand will not be steady at all times. Power demand will increase and decrease during day time and there is less demand for electricity in domestic applications, business and other facilities at over night. In order to manage the high load demand, pumped storage is necessary.

Pumped storage is maintaining water in reserve for high load demand by pumping water that has previously flow through the turbines. Because of this pumped storage method of reusing the water more than once, hydroelectric power plants is the efficient source during high load than other power plants.

The Operation of prototype model is represented in Fig. 1.

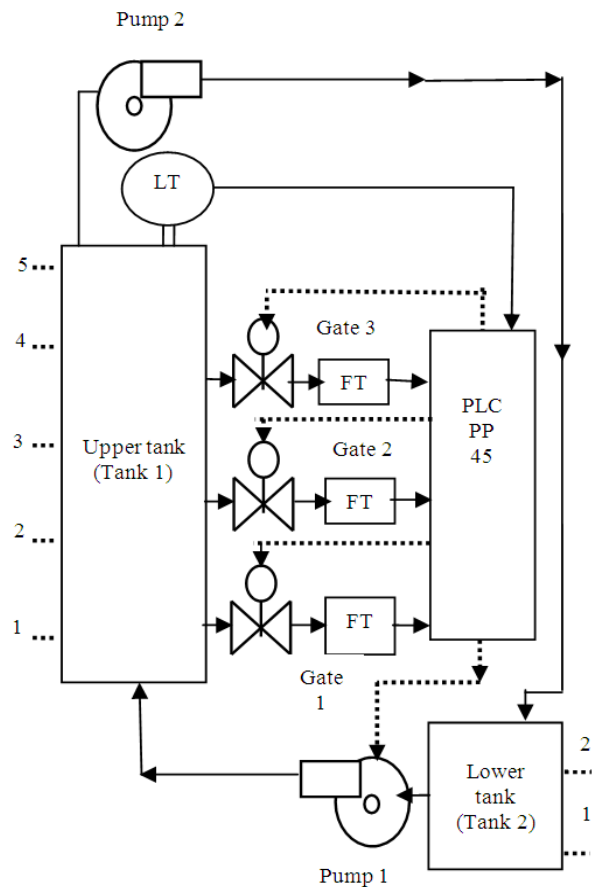


Fig. 1. Operation of prototype model

There are two tanks in the lab scale experimental set up. There are 5 stages in tank 1 and two stages in tank 2 (Rajeswari *et al.*, 2012).

The five stages in tank 1 are:

- Low level
- Average level
- Medium level
- High level
- Danger level

The two stages in tank 2 (Rajeswari *et al.*, 2012) are:

- Low level
- High level

There are some sequences followed in hydroelectric power plant that is implemented in Lab scale experimental set up.

When the water level in the tank 2 reaches the low level, the pump 1 is actuated and the water is taken to the tank 1 from the tank 2. In tank 1 when the water level reaches the low level pump 1 is again switched on and water level raises up to average level. When water exceeding average level, Gate 1 is allowed to open. Similarly when the level attains medium level, the pump 1 actuated and the water raises up to high level.

When water is mounting beyond medium level, Valve 1 and 2 is opened and when water level is exceeding beyond high level, Valve 1, 2 and 3 is opened. When the level exceeding beyond the danger level, the pump2 is actuated and water is taken back to lower tank. If the water level reaches high level in tank 1, Valve 1, 2 and 3 will be closed and also the pumps 1 and 2 will be switched off. Based on the Level Transmitter (LT) output the ladder logic is programmed and as per the programmed ladder logic, the pumps and also the opening of valves of the lab scale experimental set up are actuated at their respective stages. The Block diagram of Hardware set up is shown in Fig. 2 which consists of the following hardware components:

- Programmable logic controller
- FT-Flow Transmitters
- LT-Capacitive Level Transmitter
- Pumps
- Valves

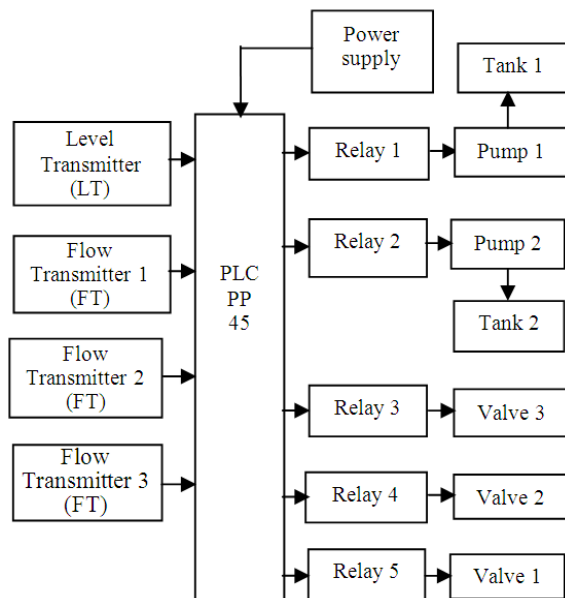


Fig. 2. Block diagram of hardware set up

The Lab scale Experimental set up is regulated based on the above mentioned sequences. The Lab scale Experimental set up is shown in Fig. 3.

3. CONVENTIONAL SCHEME FOR HYDROELECTRIC POWER PLANT

Figure 4 represents the B&R Industrial Automation PLC.

Using this PLC the control action is performed for maintaining the level in the tank and flow rate to the turbine based on load demand. B&R Industrial Automation PLC inbuilt with 24 digital inputs and provides 16 potential free outputs is used to perform control action.



Fig. 3. Lab scale experimental set up



Fig. 4. B&R programmable logic controller

Here this PLC is utilized for automation in small hydroelectric plant depending on the operational requirements. The Hardware components of B&R PLC system is shown in **Fig. 5**. It has:

- Processor Unit (CPU)
- Memory section
- Input/output sections
- Power supply unit
- Programming device
- System buses

In **Fig. 6**. Block diagram for flow control in Hydro Plant is represented. Gates (final control element) will open/close in hydro electric plant depending on the water level in the reservoir.

The water level in the reservoir is measured by capacitive level sensor. The actual level value is manipulated to the flow set point by using flow manipulator. Comparison between desired water flow and actual flow rate is done and the deviation is controlled by PLC which gives manipulated variable to the Gate valves. The water outflow from the gate valve is taken to the turbine.

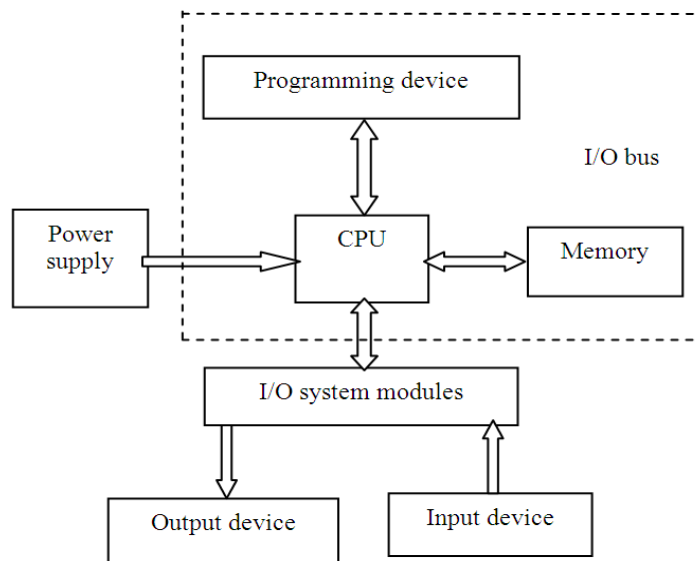


Fig. 5. Hardware components of B&R PLC

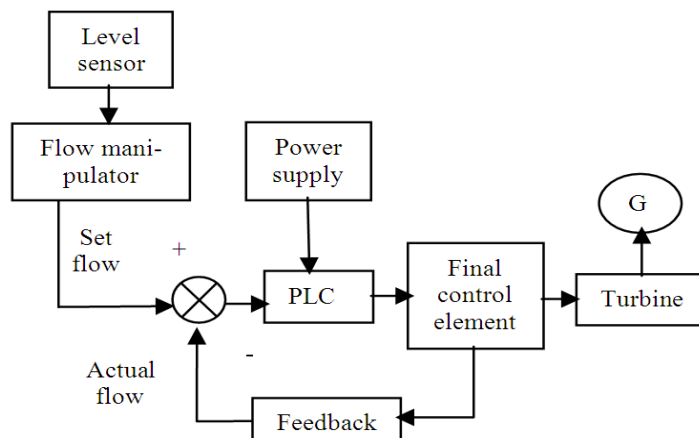


Fig. 6. Block diagram for flow control in Hydro Plant

4. PLC-HMI BASED FUZZY SCHEME FOR HYDRO PLANT

The proposed PLC-HMI based fuzzy scheme for flow and level control is shown in the Fig. 7.

During start up power obtained is opposite to the direction of change in valve position. When sudden open in gate is done because of water inertia the flow will not do immediate change instead of that the pressure across the turbine will reduce consistently making power to reduce. When sudden increase or decrease in load occurs the water accelerates until the water flow settles to the new desired value (Falqueto and Telles, 2007).

Because of the sudden increase and decrease in load the gate opening/closing operation may have limitation in speed deviation but it formulate damages to turbine/generator shaft. If slow and smooth operation of gate is preferred to prevent this type of damages that will leads to lagging in load due to low pick up of the turbine/generator and also the drop in frequency will occur. So it is necessary to get (Falqueto and Telles, 2007) a suitable signal so that to operate the gate which will satisfy the sudden load change and also to maintain the constant speed, the proposed PLC-HMI based fuzzy scheme is done. Thereby the maximum sudden in and out of load change is expected and equivalent manipulation in valve position is obtained using the proposed scheme. The opening and closing of the gate position is done in three types. It is step closing/opening for sudden change, ramp closing/opening for velocity and exponential opening/closing for acceleration.

Two fuzzy controllers are used for water flow and water level control. Fuzzy water level controller inputs are the error and change in error. Similarly inputs to the Fuzzy water flow controller are derived with respect to the error in water level. The FLC implemented for hydro power plant has two inputs and one output for water flow and level respectively. Error and change in error are the inputs are and the output is the variation in pump speed or OFF condition for the water flow. The universes of discourse of the controller variables are E, ΔE and U respectively.

The triangular membership functions are used to represent the linguistic terms (VS = Very small; S = Small; M = Medium; L = Large; VL = Very Large). Rule base is developed and an inference mechanism is designed using Mamdani (min-max) method that gives the output signal to the final control elements. The output of the inference mechanism is a fuzzy value and is converted into crisp value using centroid method for defuzzification. The parameters of the FLC system designed for the hydro electric power plant are presented in Table 1.

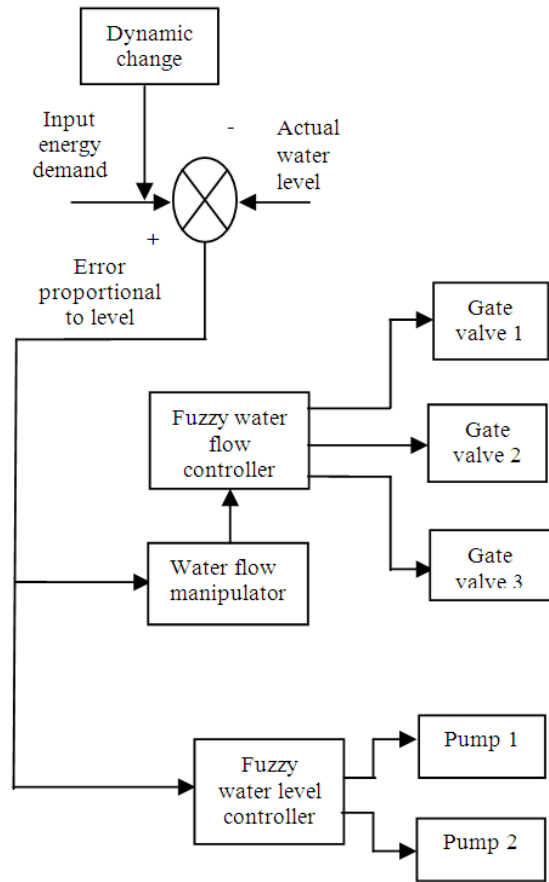


Fig. 7. PLC based fuzzy controller scheme

Table 1. FLC parameters for flow and level controller

Parameters	Flow control	Level control
Input variables	2	2
Fuzzy sets	5	5
Rules	18	20
Membership function	Triangular	Triangular
Defuzzification method	Centroid	Centroid

5. VISUALIZATION

Visualization is the process of designing a Human Machine Interface (HMI) used to operate the PLC with ease. A variety of devices have been in past for interfacing the machine to provide an easy control of the operations. The most modern technique involves the use of touch screen to give the inputs.

Touch screen are considered more superior to the other interfacing devices since it is very easier to give inputs to the PLC. The operations can also be monitored

using the screens. Whenever any operations are being performed it is displayed on the screen and thus enables the user to keep track of what is happening.

Figure 8 represents the hydro electric plant prototype in HMI. By seeing this, Hardware set up operation in HMI can be able to understand, monitor and supervise the operation and if mistake occurs rectification in the process can also be done.

Figure 9 represents start/stop button in HMI for the designed prototype model. The process can be start/stop at any time by pressing the button. **Figure 8** represents the whole working operation of the hardware set up in online by using PLC-HMI.

Figure 10 represents the actuation of valves 1, 2, 3, pumps 1 and 2 in HMI. This display indicates the particular valve or pump which is set in motion presently.

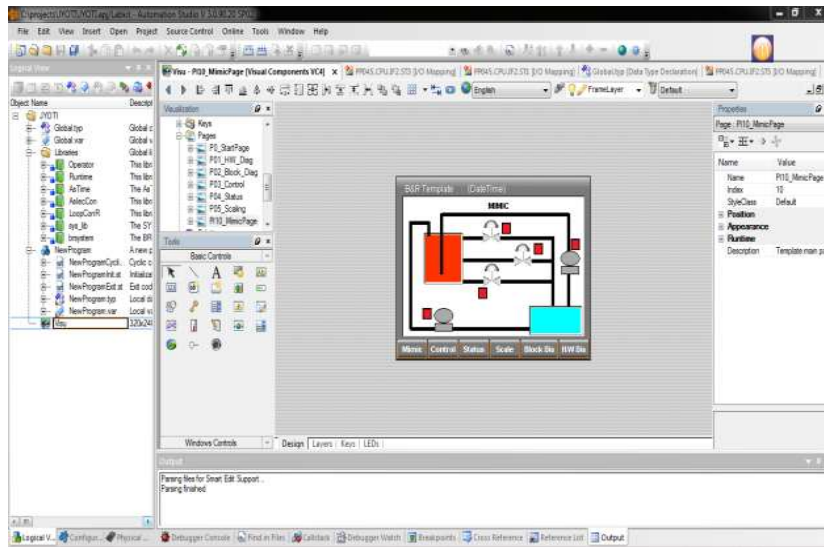


Fig. 8. HMI displays hardware set up operation

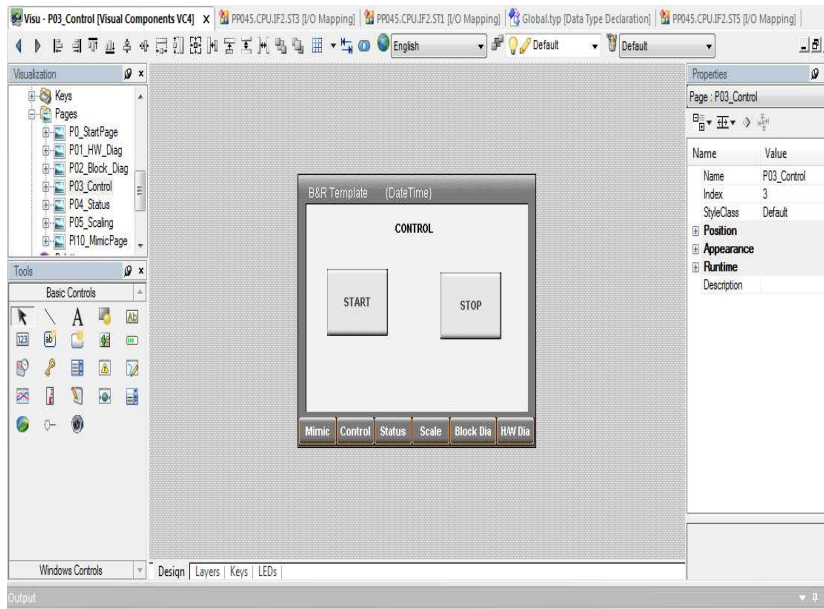


Fig. 9. HMI displays start/stop button

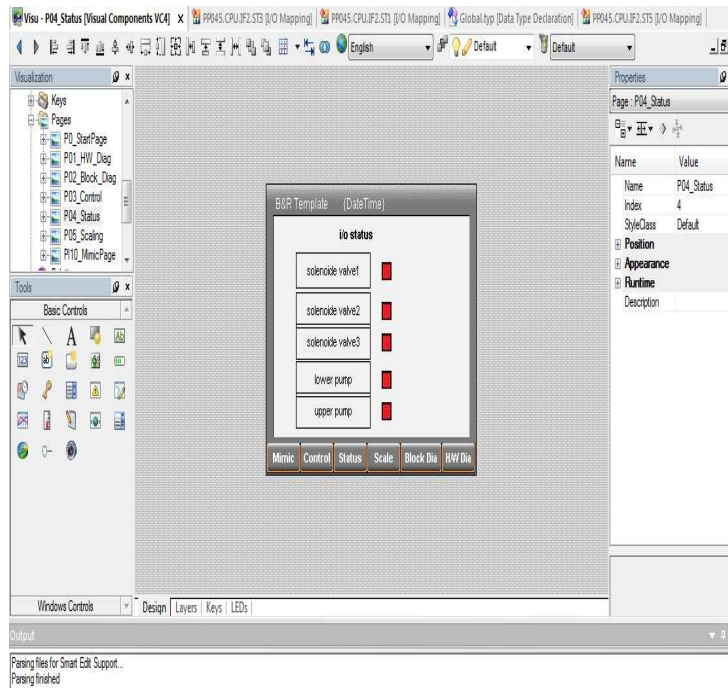


Fig. 10. HMI displays valves and pumps operation

Software for creating the visualization are specific for a PLC and provided by the B&R Industrial Automation Pvt. Ltd (Austria). Thus the software automation studio, proprietary software for the PLC is used along with it.

The automation studio provides a user friendly interface for creating and calibrating the touch screens. It has various dynamic features such as profiler, logger and program watch that helps the user to carry in the programming task as well with ease and it helps for the easy correction of the mistakes made.

6. SIMULATION STUDIES

Plenteous experiments were conducted on the proto type model and the performances for both changes in the set point as well as in the load perturbation were studied. The responses obtained for up and down step variation in load for conventional and fuzzy scheme in hydroelectric power plant are shown in **Fig. 11-13**.

Comparisons of time domain specifications such as Rise time, peak time and settling time for conventional and the proposed PLC-HMI based fuzzy scheme was done. Similarly the performance evaluation criteria such as Integral Square Error (ISE) and Integral Absolute Error (IAE) was done for both conventional and the proposed scheme PLC-HMI based fuzzy for various step changes in load and it is presented in **Table 2 and 3**.

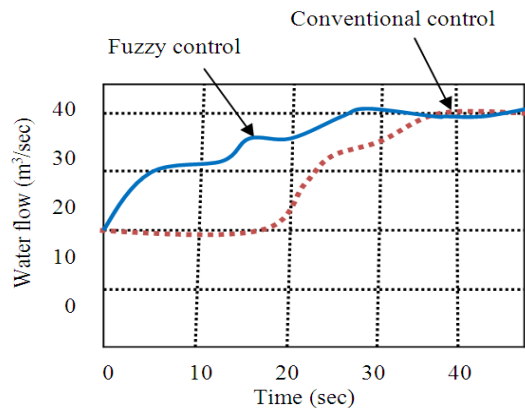


Fig. 11. Load 10 MW-20 MW Valve 1 opening above average level set point 20-40 m³/sec

Analyzing Time domain specifications, Rise time is low in conventional method because of dead time because of that delay in time, it gave sudden open in gate that leads to water inertia and the flow didn't do immediate change whereas in this innovative fuzzy scheme, gate position is identified and a suitable signal is manipulated to operate the gate which satisfied the sudden load change and maintained constant speed with less settling time.

Table 2. Comparisons of performance evaluation criteria

Control scheme	Control loop	Load 10MW-20MW		Load 40MW-60MW	
		ISE	IAE	ISE	IAE
Conventional PLC	Water flow	9832	8784	9544	8465
PLC-HMI based fuzzy	Water flow	7355	7526	7495	7189

Table 3. Comparisons of time domain specifications

Control scheme	Control loop	Load 10MW-20MW			Load 40 MW-60MW		
		Rise time	Peak time	Setl time	Rise time	Peek time	Setl time
Conventional PLC	Water Flow	30	34	37	31	34	35
PLC - HMI based Fuzzy	Water Flow	20	26	32	15	17	20

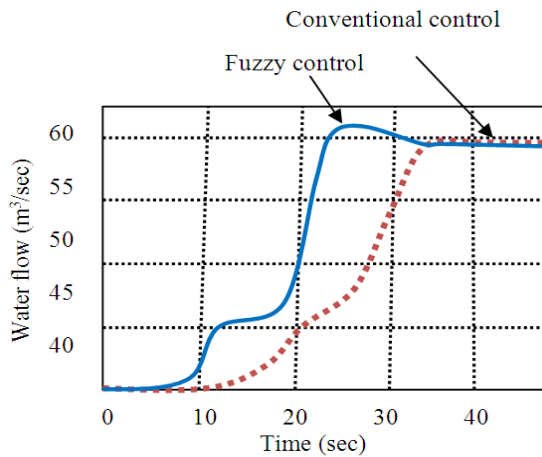


Fig. 12. Load 20 MW-40 MW Valve 2 Opening at medium level Set Point 40-60 m³/sec

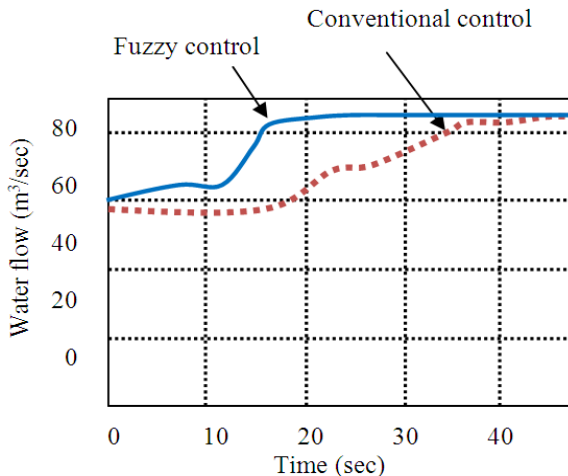


Fig.13. Load 40 MW-60 MW Valve 3 opening at high level set point 60-85 m³/sec

Similarly analyzing the Performance Evaluation criteria, the conventional method has large ISE and IAE errors when compared with the proposed scheme. This highlights the better performance of PLC-HMI based Fuzzy than conventional control scheme.

7. CONCLUSION

The result of this real time work emphasizes the robustness of the PLC-HMI based fuzzy controller scheme for step variation in loads. The response of conventional control system has 24% overshoot for water flow. It settles down after about 65 steps of increment for water flow. The closed loop response of the PLC-HMI based fuzzy water flow controller scheme shows satisfactory transient response without much overshoot and reaches steady state after about 50 steps of increment for water flow.

This proposed PLC-HMI based fuzzy controller scheme shows 42% improvement over conventional schemes in settling time for water flow by having least ISE and IAE values for the step changes in load showing 15% improvement for water flow when compared to conventional schemes. The qualitative and quantitative evaluation of the performance of the various control schemes exposes the supremacy of the PLC-HMI based FLC scheme over the conventional schemes. There would be some limitations such as time delay in the proposed scheme during dynamic load change but it could be overcome by cascade scheme as future scope of this project.

8. REFERENCES

Adhikary, P., P.K. Roy and A. Mazumdar, 2012. Safe and efficient control of hydro power plant by fuzzy logic. *Int. J. Eng. Sci. Adv. Technol.*, 2: 1270-1277.

- Atmojo, R.N.P., Anindito, B. Pardamean, B.S. Abbas and A.D. Cahyani *et al.*, 2014. Fuzzy simple additive weighting based, decision support system application for alternative confusion reduction strategy in smartphone purchases. *Am. J. Applied Sci.*, 11: 666-680. DOI: 10.3844/ajassp.2014.666.680
- Bai, V.R. and M.R. Tamjis, 2007. Fuzzy logic model on operation and control of hydro-power dams in Malaysia. *ICCES*, 4: 31-39.
- Falqueto, J. and M.S. Telles, 2007. Automation of diagnosis of electric power transformers in Itaipu Hydroelectric Plant with a fuzzy expert system. *Proceedings of the IEEE Conference on Emerging Technologies and Factory Automation*, Sept. 25-28, IEEE Xplore Press, Patras, pp: 577-584. DOI: 10.1109/EFTA.2007.4416821
- Guo, L., 2009. Design projects in a programmable logic controller course in electrical engineering. *Technol. Interface J.*
- King, D.J., D.A. Bradley, S.P. Mansoor, D.I. Jones and F.C. Aris *et al.*, 2001. Using a fuzzy inference system to control a pumped storage hydro plant. *Proceedings of the 10th IEEE International Conference on Fuzzy Systems*, Dec. 2-5, IEEE Xplore Press, pp: 1008-1011. DOI: 10.1109/FUZZ.2001.1009132
- Liang, R.H., 2000. A noise annealing neural network for hydroelectric generation scheduling with pumped-storage units. *IEEE Trans. Power Syst.*, 15: 1008-1013. DOI: 10.1109/59.871726
- Nanhua, L. and Y. Xiaoju, 2010. The adaptive fuzzy controller of hydroelectric units with hydraulic interconnection. *Proceedings of the Chinese Control and Decision Conference*, May 26-28, IEEE Xplore Press, Xuzhou, pp: 3998-4003. DOI: 10.1109/CCDC.2010.5498432
- Rabelo, R.A.L., R.A.S. Fernandes and I.N. Silva, 2012. Operational planning of hydrothermal systems based on a fuzzy-PSO approach. *Proceedings of the IEEE Congress on Evolutionary Computation*, Jun. 10-15, IEEE Xplore Press, Brisbane, QLD, pp: 1-8. DOI: 10.1109/CEC.2012.6256596
- Rajeswari, V., Y. Rajeshwari and L.P. Suresh, 2012. Real-time implementation of hydroelectric power plant using PLC and SCADA. *Int. J. Eng. Res. Applic.*, 2: 899-902, 2012.
- Singh, G. and D.S. Chauhan, 2011. Simulation and modeling of hydro power plant to study time response during different gate states. *Int. J. Adv. Eng. Sci. Technol.*, 10: 042-047.
- Umamahesh, N.V. and S. Chandramouli, 2006. Fuzzy dynamic programming model for optimal operation of a multipurpose reservoir. *J. Water Resources Plann. Manage.*, 18: 14-20.
- Yadav, O., N. Kishor, J. Fraile-Ardanuy, S.R. Mohanty and J.I. Pérez *et al.*, 2011. Pond head level control in a run-of-river hydro power plant using fuzzy controller. *Proceedings of the 16th International Conference on Intelligent System Application to Power Systems*, Sept. 25-28, IEEE Xplore Press, Youssef, pp: 1-5. DOI: 10.1109/ISAP.2011.6082177